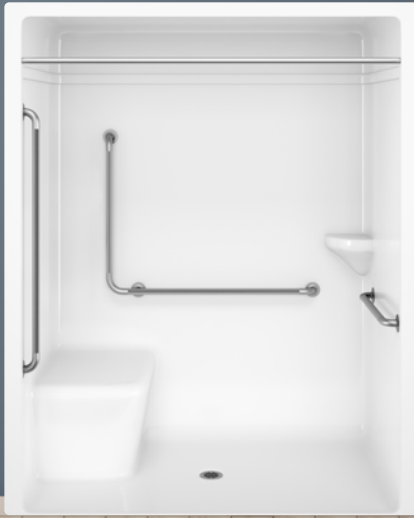


# SC2366 CSA 3BAR MOULDED LS/RS

66" Special Care Acrylic Shower - 1 pc.



Measurements h 84" x w 66" x d 36-1/2"  
Standard threshold height: 1-3/4"

Weight 230 lb / 104 kg  
(Weight may vary by options and configuration of unit)

Drain Location Centre drain

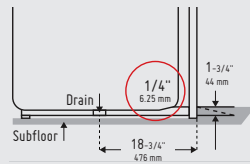
## PRODUCT SPECIFICATIONS

- High quality, non-porous acrylic surface is easy to clean, germ and residue free
- Superior strength and weight designed for institutional and special care applications
- 3-Heavy duty 1-1/4" (32mm) knurled stainless steel safety grab bars with 1-1/4" (32mm) standoff
- Steel reinforcing plates at rear of unit complete with stainless steel bolts going all the way through with washer and nut on outside; plates are caulked and sealed with high quality silicone
- Factory installed stainless steel shower curtain rod
- Available with moulded left seat, right seat or no seat (No seat option eliminates CSA compliance)
- Front drip lip
- Reinforced shower base provides added strength to unit
- Quality 2"/51 mm ABS drain with stainless steel strainer
- Self draining soap dish/shelf
- Designed for recessed floor installation - the SC2366 barrier free showers provide the user with a barrier free transition into the shower
- Textured bottom
- Can be customized with a wide range of accessories and options
- Bar size and placement can be modified to municipal/provincial standards upon request

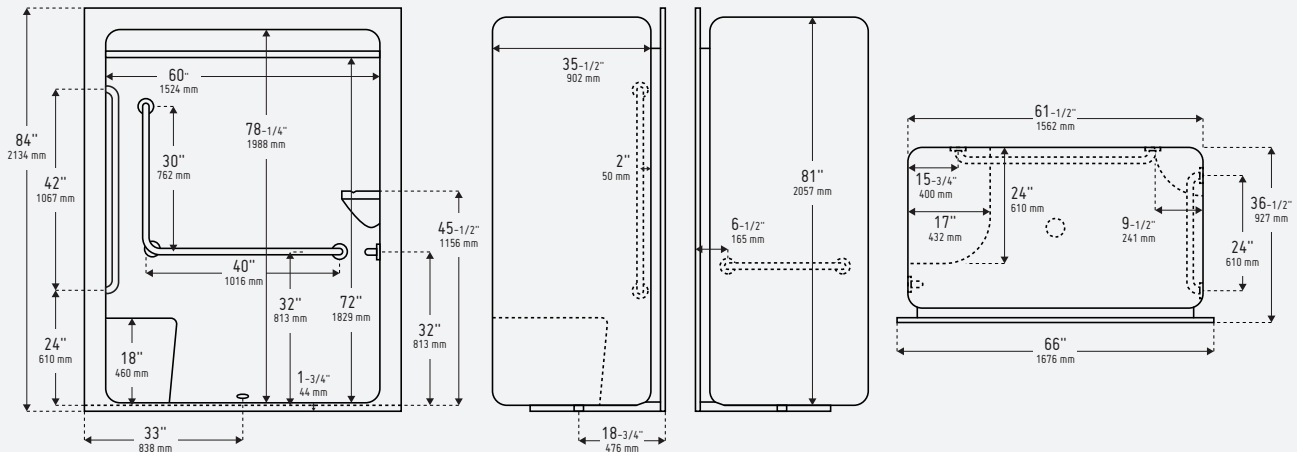
### Detail of threshold recessed floor application

Bevelled threshold is less than 13 mm from finished shower floor for wheelchair transition.


Recessed application bring floor level with shower threshold or ramp up to shower threshold.



Product image and technical drawing may be shown with optional equipment.



NO SEAT the shower comes with the self draining soap dishes/shelves in both corners of the shower (unless requested to be removed).  
PHENOLIC SEAT the shower comes with the self draining soap dishes/shelves in both corners of the shower (unless requested to be removed).  
MOULDED SEAT the self draining soap dishes/shelves are eliminated on the moulded seat side of the shower (unless requested to remain).

 Compliance Certifications meet or exceed the following specifications:

- CAN/CSA B651-18 2018 Barrier Free
- CAN/ULC - S102.2 - M88 Flame Spread FRP laminate rating
- B45.5-11/IAPMO Z124-2011

For general information purposes only and may contain optional equipment and/or configurations. Please consult your wholesaler, sales associate or Longevity Acrylics Inc. to obtain current dimensions, specifications, guidelines, options and prices which are available through Longevity Acrylics Inc current Price Book. Dimensions of fixtures are nominal and may vary +/- 1/2" (12 mm) - Optional equipment, specifications and measurements are subject to change at manufacturers discretion. Unless otherwise specified, the grab bar positioning is pre-determined by the seat location. Repositioning the grab bar or seat outside of the compliant zones render the unit no longer compliant. Consult code regulations. Warning: Due to possible water spillage between the lip of the shower and the curtain, Longevity Acrylics recommends the installation of a floor drain outside the unit, in rooms where the units will be installed.

# SC2366 CSA 3BAR MOULDED LS/RS

66" Special Care Acrylic Shower - 1 pc.

←66→  
INCH WIDE



CSA  
COMPLIANT

Model	Description
SC2366 CSA 3BAR MOULDED LS/RS	<ul style="list-style-type: none"> <li>- Description: 66" acrylic shower</li> <li>- Standard Colour: white</li> <li>- Features: factory installed 1 - 40"x 30" "L" shaped stainless steel grab bar (1-1/4" dia, knurled); 1 - 42" stainless steel grab bar (1-1/4" dia, knurled); 1 - 24" stainless steel grab bar (1-1/2" dia, knurled); stainless steel curtain rod</li> <li>- Threshold Height: 1-3/4"</li> <li>- Assembly: 1 pc. construction</li> <li>- Drain Location: stainless steel 2" (51 mm) centre drain (ABS)</li> <li>- Moulded Seat: 635mm (w) x 501mm (d) x 438mm (h) moulded left seat or moulded right seat; (No seat option eliminates CSA compliance)</li> <li>- Textured bottom</li> <li>- Not suitable for door application</li> </ul>

NO SEAT the shower comes with the self draining soap dishes/shelves in both corners of the shower (unless requested to be removed).

PHENOLIC SEAT the shower comes with the self draining soap dishes/shelves in both corners of the shower (unless requested to be removed).

MOULDED SEAT the self draining soap dishes/shelves are eliminated on the moulded seat side of the shower (unless requested to remain).

## OPTIONS (Model#-"X" denotes that the model has options added + add option model code)

Model	Description
<b>COLOURS</b>	
Standard	Bone - Biscuit
<b>LIGHTS</b>	
DL-4LED-WH	4" LED Round Dome light factory installed, white trim
DL-4LED-BK	4" LED Round Dome light factory installed, black trim
DL-4LED-CH	4" LED Round Dome light factory installed, chrome trim
<b>GRAB BARS</b>	
DB-18-SK	Dependa-Bar™ 18"/46cm, Knurled factory installed (option eliminates OBC compliance)
<b>SHOWER DRAINS</b>	
SERENITY DRAIN-BK	Round Serenity Brass Shower Drain Infinity Style, black
SERENITY DRAIN-CH	Round Serenity Brass Shower Drain Infinity Style, chrome
SYMPHONY DRAIN-BK	Round Symphony Brass Shower Drain Grate Style with removal hair trap, black
SYMPHONY DRAIN-CH	Round Symphony Brass Shower Drain Grate Style with removal hair trap, chrome
PVC-FR DRAIN	2" PVC fire rated shower drain
<b>WATER STOPPER KIT</b>	
	Grey Water Stopper Kit complete with Large Radius End Caps
<b>SOAP DISHES</b>	
SA16RSD	Factory installed stainless steel recessed soap dish for SC2366

## OPTIONS



Recessed Soap Dish



LED Light



Additional Backing & Drilling



Fire Rated Shower Drain



Water Stopper Kit