

SPECIAL CARE

# SC1560-LT

60" one piece domeless low threshold acrylic tub shower



SPECIAL CARE

# SC1562-LT

60" two piece renovation-friendly domeless low threshold acrylic tub shower

LOW  
THRESHOLD



h 78-1/4" x w 60" x d 33" (One piece unit)

h 78-1/4" x w 60" x d 33" (Two piece unit)

Standard threshold height: 16"

Optional threshold height: 14"

(eliminates above floor rough-in)

Slope of Backrest: 38°



140 lb / 64 kg

(Weight may vary by options and configuration of unit)



45 gal / 170 l



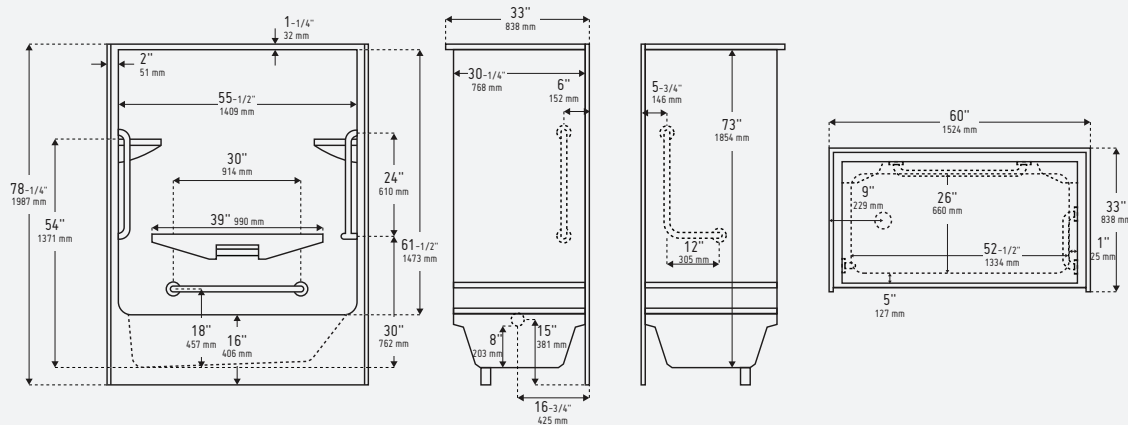
Left or right end drain

## PRODUCT SPECIFICATIONS

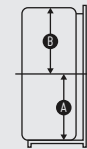
- Superior strength and weight designed for institutional and special care applications
- Factory installed knurled finish, stainless steel grab bars (3) for safety and ease of shower entry and exit
- Large tub area with ergonomic backrest
- Centre shelf complete with acrylic towel bar
- Self draining soap dishes/shelves
- Reinforced shower base provides added strength to unit
- Designed to be installed on the existing sub-floor
- Can be customized with a wide range of accessories and options



Product image and technical drawing may be shown with optional equipment.



Two and three piece  
bathware sections



A : 24-1/4" 616 mm  
B : 54" 1372 mm

Adding spa therapies and optional equipment (motors) may change products overall dimensions.

For general information purposes only and may contain optional equipment and/or configurations. Please consult your wholesaler, sales associate or Longevity Acrylics Inc. to obtain current dimensions, specifications, guidelines, options and prices which are available through Longevity Acrylics Inc current Price Book. Dimensions of fixtures are nominal and may vary +/- 1/2" (12 mm) - Optional equipment, specifications and measurements are subject to change at manufacturers discretion. Unless otherwise specified, the grab bar positioning is pre-determined by the seat location. Repositioning the grab bar or seat outside of the compliant zones render the unit no longer compliant. Consult code regulations. Warning: Due to possible water spillage between the lip of the shower and the curtain, Longevity Acrylics recommends the installation of a floor drain outside the unit, in rooms where the units will be installed.



Compliance Certifications meet or exceed the following specifications:

- CAN/ULC - S102.2 - M88 Flame Spread
- FRP laminate rating
- B45.5-11/IAPMO Z124-2011

SPECIAL CARE

# SC1560-LT

60" one piece domeless low threshold acrylic tub shower



SPECIAL CARE

# SC1562-LT

60" two piece renovation-friendly domeless low threshold acrylic tub shower

Model	Description
SC1560-LT LD/RD	- Description: 60" domeless acrylic tubshower - Standard Colour: white - Features: 3 stainless steel grab bars (knurled) - Threshold Height: 16" - Assembly: 1 pc. construction - Drain Location: left or right end drain - Slope of Backrest: 38°
SCW1560-LT LD/RD-6	System: Whirlpool bath 6 jets; 3/4 hp pump, tub mounted on/off switch; 2 air controls; integrated timer; colour coordinated jets
SCT1560-LT LD/RD-MFE	System: Therapeutic air bath; 1 hp blower; MFE electronic control switch; 12 colour coordinated jets; inline heater
SCT1560-LT LD/RD-ML	System: Therapeutic air bath; 1 hp blower; ML electronic control switch; 32 mini lateral chrome jets; inline heater
SCWT1560-LT LD/RD-6	System: Combination 6 jet and therapeutic air; 3/4 hp pump; 2 air controls and MFE switch controls both systems; includes air on/off; variable speed and wave cycle plus whirlpool on/off; inline heater (air system); note: when installing a combination system space for two motors must be considered

Model	Description
SC1562-LT LD/RD	- Description: 60" domeless acrylic tubshower - Standard Colour: white - Features: 3 stainless steel grab bars (knurled) - Threshold Height: 16" - Assembly: 2 pc. construction - Drain Location: left or right end drain - Slope of Backrest: 38°
SCW1562-LT LD/RD-6	System: Whirlpool bath 6 jets; 3/4 hp pump, tub mounted on/off switch; 2 air controls; integrated timer; colour coordinated jets
SCT1562-LT LD/RD-MFE	System: Therapeutic air bath; 1 hp blower; MFE electronic control switch; 12 colour coordinated jets; inline heater
SCT1562-LT LD/RD-ML	System: Therapeutic air bath; 1 hp blower; ML electronic control switch; 32 mini lateral chrome jets; inline heater
SCWT1562-LT LD/RD-6	System: Combination 6 jet and therapeutic air; 3/4 hp pump; 2 air controls and MFE switch controls both systems; includes air on/off; variable speed and wave cycle plus whirlpool on/off; inline heater (air system); note: when installing a combination system space for two motors must be considered

Adding spa therapies and optional equipment (motors) may change products overall dimensions.

## OPTIONS

Option	Description
THRESHOLDS	
Optional Threshold Height	14" (eliminates above floor rough-in)
COLOURS	
Standard	Bone - Biscuit
Premium	Ice Grey - Black - Sandbar
SEATS	
70-PA2814501	28" x 14-1/2" Flip Up Tub Seat (White Padded)
70-PH2814501	28" x 14-1/2" Flip Up Tub Seat (White Phenolic)
70-PH2814515	28" x 14-1/2" Flip Up Tub Seat (Woodgrain Phenolic)
GRAB BARS	
DB-18-SK	Dependa-Bar™ 18"/46cm, Knurled factory installed
24SSGB	24" stainless steel grab bar factory installed
30SSGB	30" stainless steel grab bar factory installed
SPA EXPERIENCES	
4MBJ-WH/CH	4 micro back jets with on / off switch (whirlpool systems only) white or chrome
IHFI	Inline heater factory installed (whirlpool systems only)
CKFI	Chromotherapy kit factory installed - includes 2 LED lights with 9 bulbs per light with electronic control (7 colours)
CL	Additional chromotherapy lights (up to 9 lights can be installed)
3FT-X-KIT	3 ft extension kit for blower motor (air massage)
CW-HEAT-BATH	Comfortwarm Heating Pad™/Chrome Keypad/Control with Transflo/ 22" x 8" 35 watt pad factory installed
AROM-MECH	Mechanical Aromatherapy Kit (for whirlpool and air therapeutic tubs only) factory installed
AROM-ELECT	Aromatherapy Kit complete with Chrome Keypad/TMS Control Box factory installed

## DOORS

Model	Description
TS-55SL-COR-C/C	2 panel sliding door - Chrome/Clear
TS-55SL-COR-C/O	2 panel sliding door - Chrome/Obscure
TS-40BFS-C/C	Bifold pivot tub shield - Chrome/Clear - 6mm glass - NEW